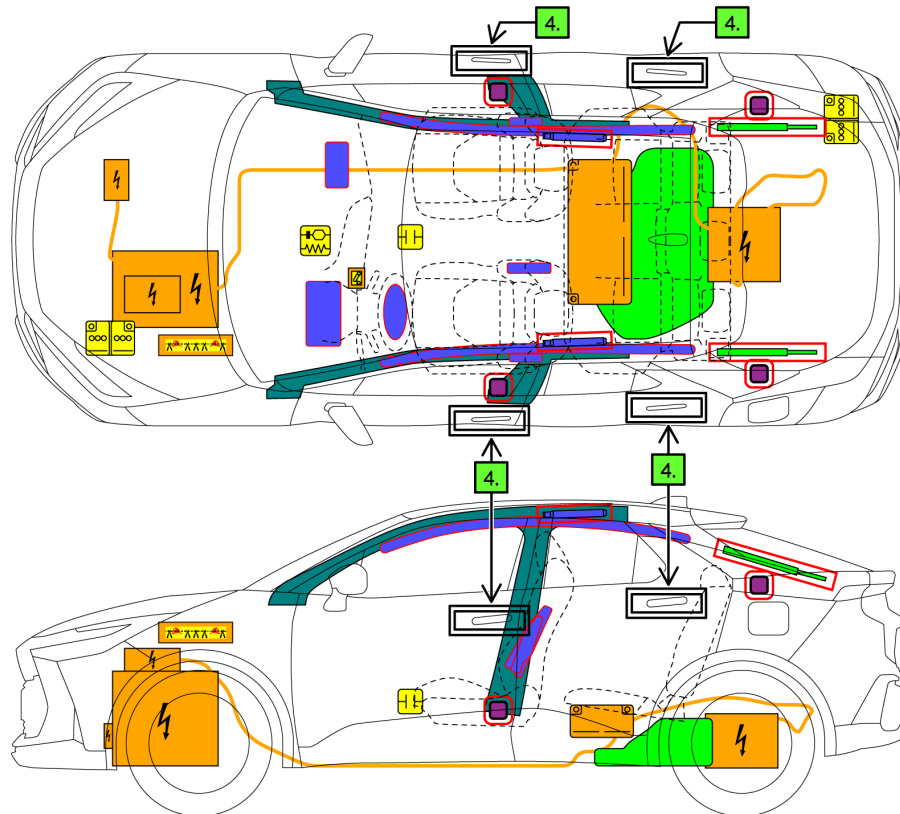




TOYOTA C-HR
5 doors / 5 seats / hatchback
2023-10



	Airbag		Stored gas inflator		Seat belt pretensioner		SRS control unit		Gas strut / Preloaded spring
	High strength zone		Zone requiring special attention		Battery low voltage		Ultra-capacitor, low-voltage		Fuel tank
	Battery pack, high-voltage		High voltage power cable / component		Low voltage device that disconnects high voltage		Cable cut		

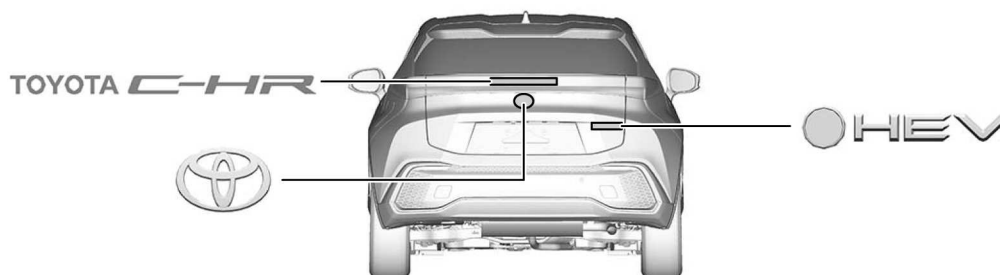
	ID No	Version No	Version date	Page
	C-HRHV20	01	10 / 2023	1 / 5

1. Identification / Recognition



Lack of engine noise does not mean vehicle is off. Silent movement or instant restart capability exists until vehicle is fully shut down.

- Location of vehicle badges

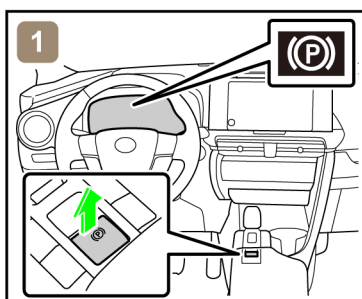


- Energy source: Lithium-ion battery

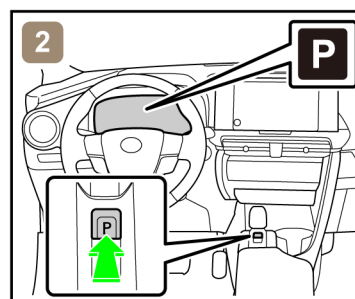


2. Immobilisation / Stabilisation / Lifting

- Completely immobilize the vehicle



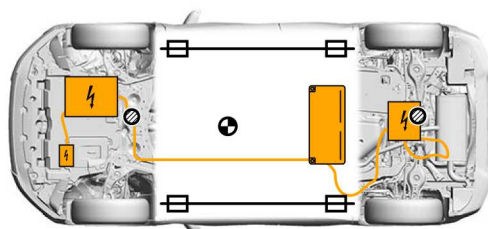
1) Check the wheels and engage the parking brake.



2) Press the P position switch.

- Stabilisation-lifting point

Place cribbing such as wooden blocks at the four points under the front and rear pillars.



Extra Reinforced Lifting Points

Standard Jack Locations

Vehicle Center of Gravity



Do not place cribbing such as wooden blocks or rescue air lifting bags under the exhaust system, fuel system or high voltage power cables. Doing so may result in fuel leaks, fire, or electric shock.

ID No	Version No	Version date	Page
C-HRHV20	01	10 / 2023	2 / 5

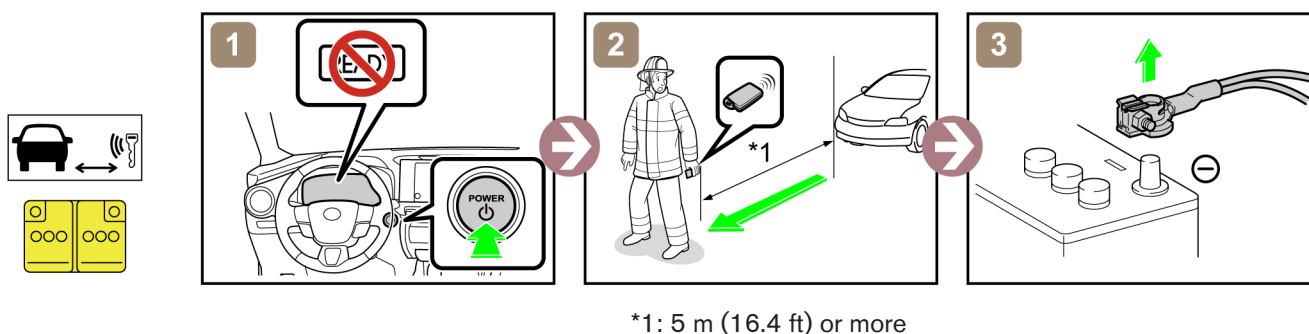
3. Disable direct hazards / Safety regulation

- If any of the following systems are required to be operated, operate them BEFORE disconnecting the battery.
 - Power door lock
 - Power window
 - Power Back door
 - Power seat
 - Electric parking brake
 - Electronic shift lever

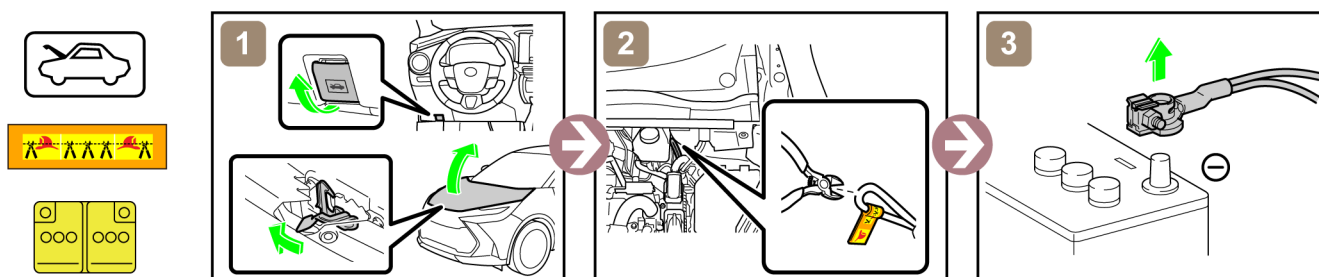
When the 12 V battery is disconnected, electrical components cannot be operated.

- Perform procedure Main or Alternative to completely shut off the vehicle.

<Main Procedure>

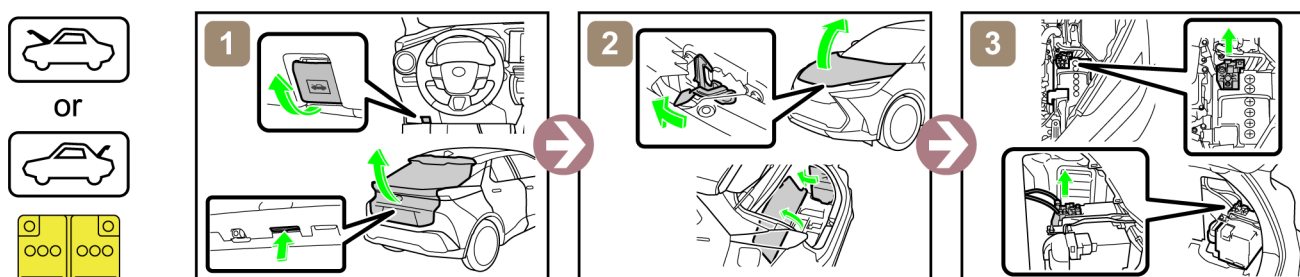


<Alternative Procedure>



In the event of an accident in which the airbags are deployed, the high-voltage system will be automatically deactivated.

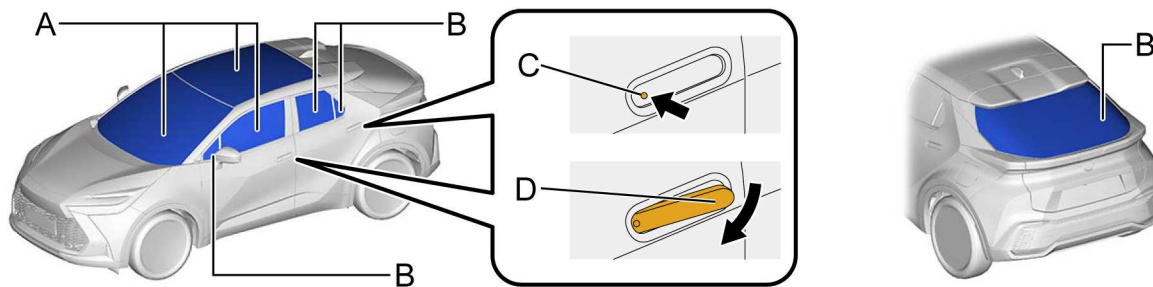
- Access to 12 V Battery



ID No	Version No	Version date	Page
C-HRHV20	01	10 / 2023	3 / 5

4. Access to the occupants

■ Window Glass



A	Laminated	B	Tempered
C	Flush Handle Movement (Depression on Front End Pressed)	D	Flush Handle Movement (Extend Operation)

5. Stored energy / Liquids / Gases / Solids



High Voltage Li-ion Battery



12 V Battery



Gasoline Tank: 40 L



- Always wear appropriate personal protective equipment (PPE) when dealing with any of these items.
- Never breach or remove the battery assembly cover under any circumstances, including fire. Doing so may result in serious injury or death from severe burns or electric shock.

6. In case of fire



USE COPIOUS AMOUNTS OF WATER

If it is difficult to apply copious amounts of water to the high voltage battery, it is recommended to allow the high voltage battery to burn itself out.



RE-IGNITION POSSIBLE !



	ID No	Version No	Version date	Page
	C-HRHV20	01	10 / 2023	4 / 5

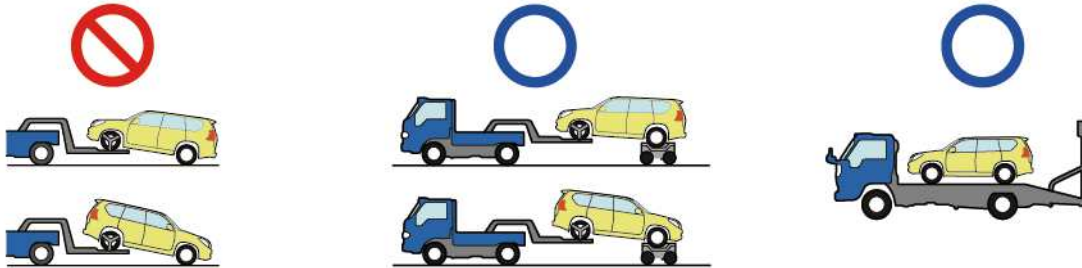
7. In case of submersion



Do not touch any of the high-voltage components or cables, including the service plug, while the vehicle is submerged. Doing so may result in electric shock.

Work on the vehicle only after the vehicle has been pulled out of the water.

8. Towing / Transportation / Storage



RE-IGNITION POSSIBLE !

Store the vehicle at a safe distance (15 m (49.2 ft) or more) from other vehicles.

9. Important additional information

For further details, please refer to "Emergency Response Guide".

<https://www.toyota-tech.eu/>

ID No	Version No	Version date	Page
C-HRHV20	01	10 / 2023	5 / 5