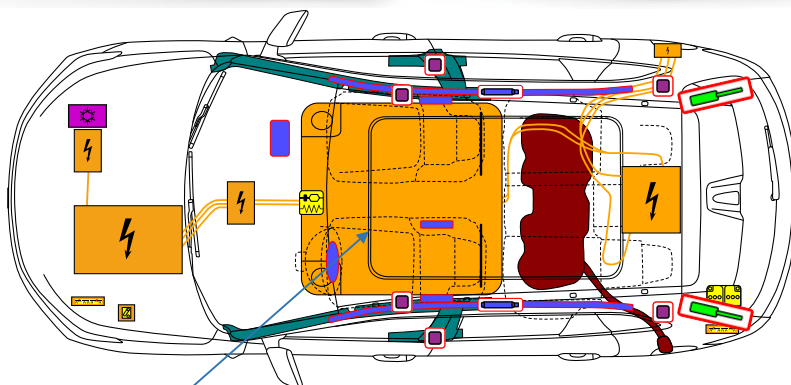


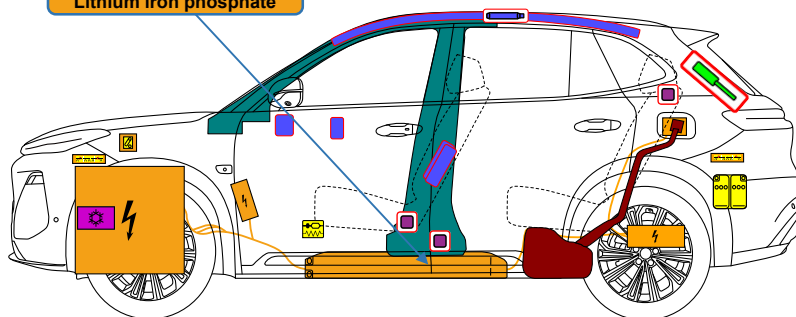


# GEELY STARRAY EM-i

5 Doors / 5 Seats / SUV  
Starting from the 2025 model



334V/350V  
Lithium iron phosphate



Airbag



Stored gas inflator



Seat belt pretensioner



SRS control unit



Battery low voltage



Gas strut / Preloaded spring



High strength zone



Cable cut



Low-voltage device that disconnects high voltage



High-voltage component



Battery pack, high-voltage



High voltage power cable



Fuel tank content gasoline / ethanol



Air conditioning component

Internal Reference

Version

Creation Date

Page

GEELY STARRAY EM-i SUV 2025 5d Hybrid EN

01

11/2025

1/4



# GEELY STARRAY EM-i

5 Doors / 5 Seats / SUV  
Starting from the 2025 model



## 1. Identification / recognition



No noise from the vehicle doesn't mean the vehicle is off, it might be running quietly or restarting instantly. Therefore, be sure to wear appropriate personal protective equipment.

### Front Brand Logo



### Rear Model Name



### Charging Port



## 2. Immobilisation / stabilisation / lifting

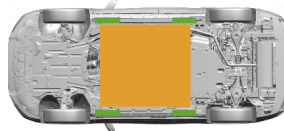
### Vehicle Securing and Parking



1. Press the brake pedal;
2. Press the P gear button on the shift lever.



### Vehicle Lifting Points

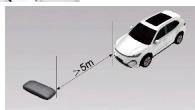


Proper stabilize-lift points

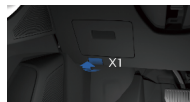
Power battery

## 3. Disable direct hazards / safety regulations

### Primary Mitigation Method:



### Alternative Mitigation Method 1:



### Alternative Mitigation Method 2:



### Disconnect the 12V low-voltage battery:



1. Open the tailgate and pry open the cover of the low-voltage battery on the left side.
2. After loosening the 12V low-voltage battery negative cable bolt, disconnect its negative terminal.



### Safety Instructions

Always assume the vehicle is powered on even when it's idle!

Always confirm the vehicle is secured, and the drive system is off; do not touch, cut, or disassemble any orange high-voltage cables and components; if a collision occurs and the seatbelt pre-tensioner/airbag is deployed, the high-voltage system will automatically shut off, but the airbag system will remain activated. Therefore, be sure to wear appropriate personal protective equipment.

Internal Reference

Version

Creation Date

Page

GEELY STARRAY EM-i SUV 2025 5d Hybrid EN

01

11/2025

2/4



## GEELY STARRAY EM-i

5 Doors / 5 Seats / SUV  
Starting from the 2025 model



### 4. Access to the occupants

#### Door Opening



Press the unlock/lock button on the driver's side door handle, and all four doors automatically unlock. Pull the door handle to open the door.

#### Steering Column Adjustment



#### Seat Adjustment



#### High-strength Area



#### Glass Type

Tempered Glass

Laminated Glass



After disconnecting the 12V low-voltage battery, the electrical system components cannot be operated.

### 5. Stored energy / liquids / gases / solids

	334V / 350V							
	12V							
	HFC-1234yf 725+/-20g							
	HFC-134a 800+/-20g							
	51L / 60L							

### 6. In case of fire

#### Fire Extinguishing Method for Power Battery:



Use a large amount of water to extinguish the fire.



The power battery may reignite or catch fire again! Be sure to wear appropriate personal protective equipment.



### 7. In case of submersion

- When wading, the high-voltage system does not increase the risk of electric shock.
- If possible, please move the vehicle out of the water and execute the vehicle power-off procedure (see Chapter 3).

Internal Reference

Version

Creation Date

Page

GEELY STARRAY EM-i SUV 2025 5d Hybrid EN

01

11/2025

3/4



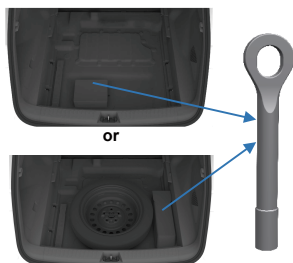
## GEELY STARRAY EM-i

5 Doors / 5 Seats / SUV  
Starting from the 2025 model



### 8. Towing / transportation / storage

Rescue Traction Ring Storage Location



Front Traction Ring Installation Position



Rear Traction Ring Installation Position



#### Traction



Park the vehicle in an open outdoor area and keep at least five meters away from other objects or vehicles.



The power battery may reignite or catch fire again! Be sure to wear appropriate personal protective equipment.



### 9. Important additional information

Due to differences in vehicle software version and vehicle configuration, please refer to the actual situation for specific information.

You can query the information of the first rescue party through the following link:

<https://global.geely.com/en/geely-starray-em-i-emergency-rescue-manual>.

### 10. Explanation of pictograms used

	Hybrid electric vehicle		Air conditioning component		Keep the smart key away from the vehicle
	Danger of electric shock		Flammable substances		Seat height adjustment
	Universal warning sign		Endangering human health		Seat adjustment front and back
	Use water to extinguish the fire		Corrosive substances		Steering wheel inclination adjustment
	Engine hood		Explosive		Low temperature warning
	Tailgate		Hazard the environment		
	Infrared (IR) devices are also called thermal imagers (TICs) under certain operating conditions		Acute toxicity		

Internal Reference

Version

Creation Date

Page

GEELY STARRAY EM-i SUV 2025 5d Hybrid EN

01

11/2025

4/4