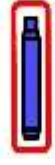


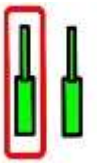

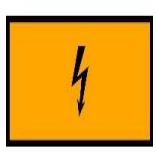
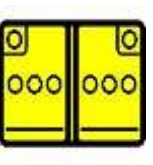
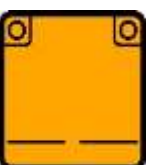


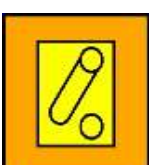
	Airbag		Stored gas inflator		Seat belt pretensioner		SRS control unit		
			Gas strut / Preloaded spring		High strength zone				High voltage component
	Battery low voltage								
	Battery pack, high- voltage		High voltage power cable						
	Cable cut		Low voltage device that disconnects high voltage						

1. Identification / recognition



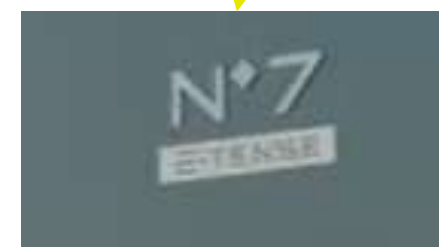
LACK OF ENGINE NOISE DOES NOT MEAN VEHICLE IS OFF, SILENT MOVEMENT OR INSTANT RESTART CAPABILITY EXISTS UNTIL VEHICLE IS FULLY SHUT DOWN. WEAR APPROPRIATE PPE.



Brand logo



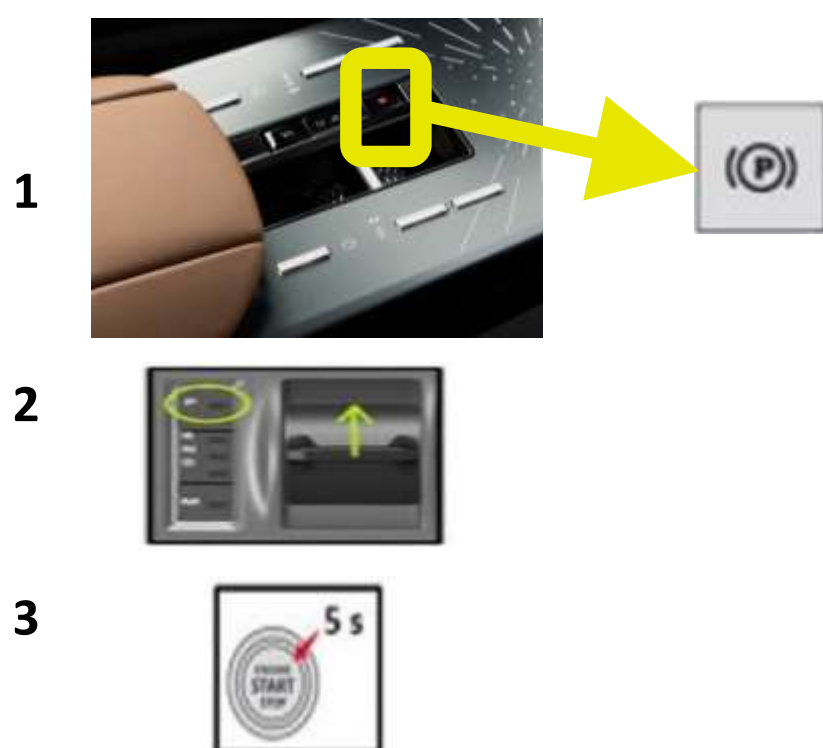
Charge port



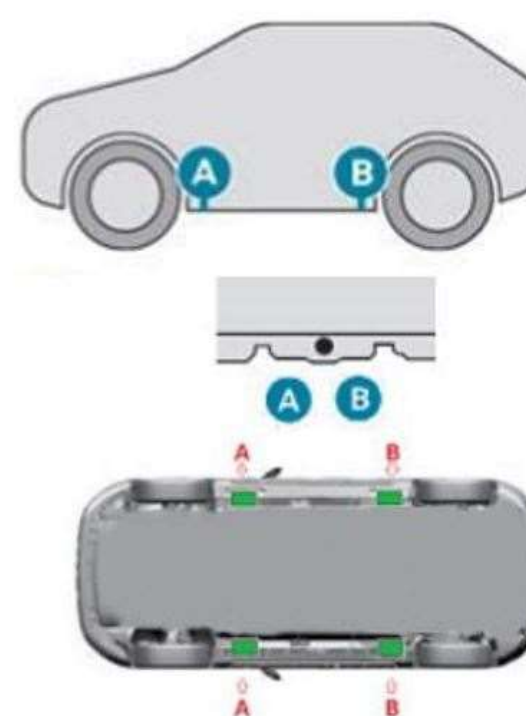
Model name

2. Immobilisation / stabilisation / lifting

Immobility



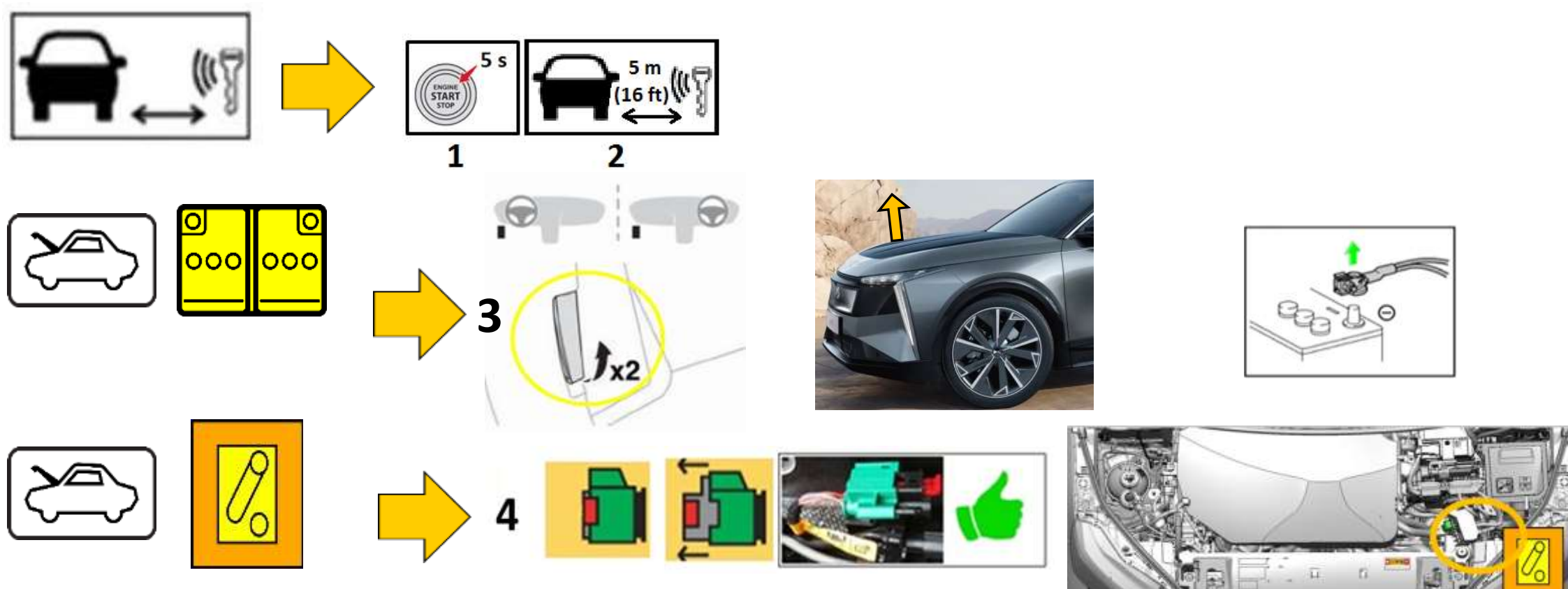
Stabilization/lifting points



Do not place cribbing such as wooden blocks or rescue air lifting bags under the fuel system or high voltage power cables. Doing so may result in fuel leaks, fire, or electric shock.

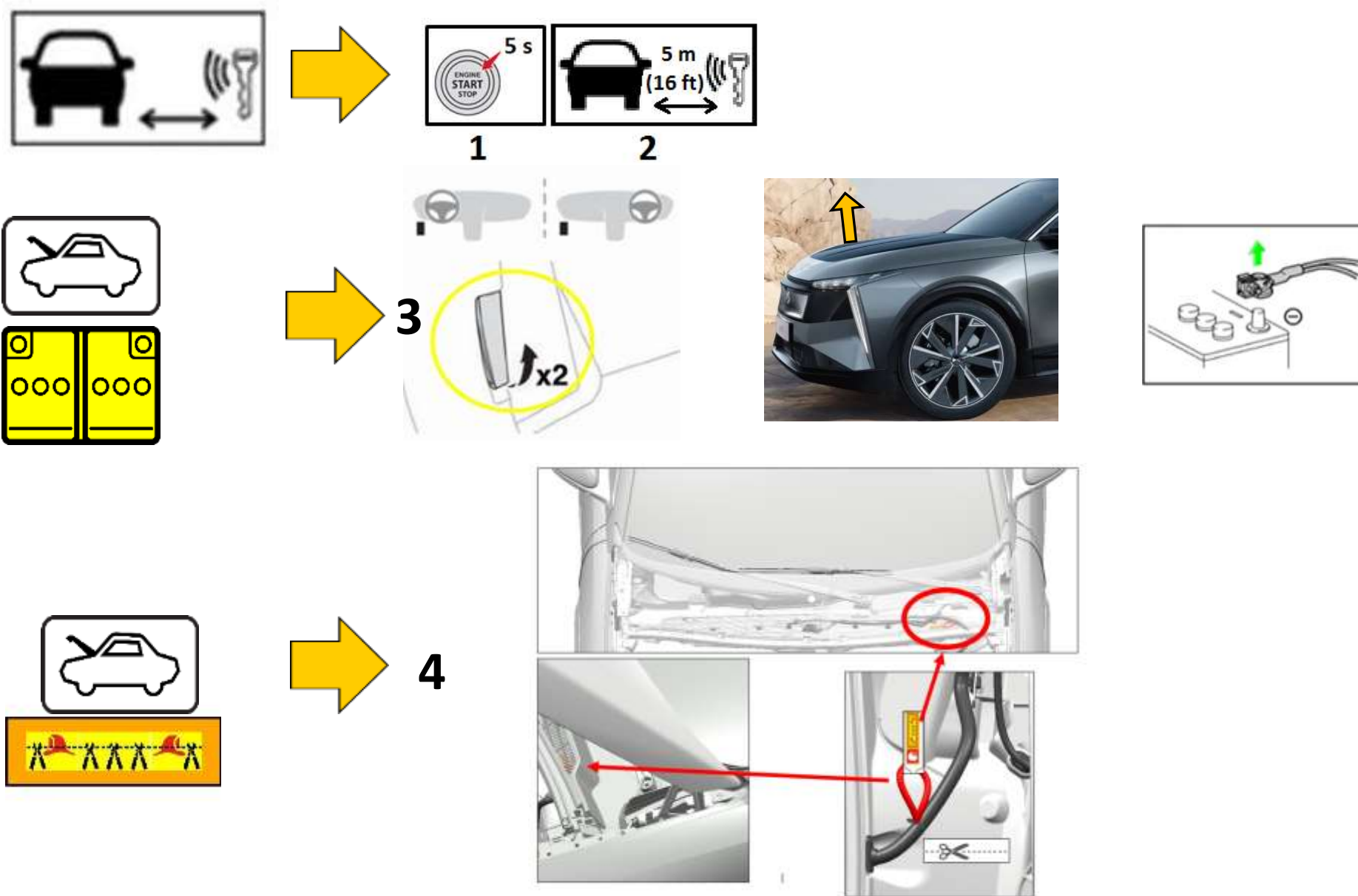
3. Disable direct hazards / safety regulations

Main disabling method

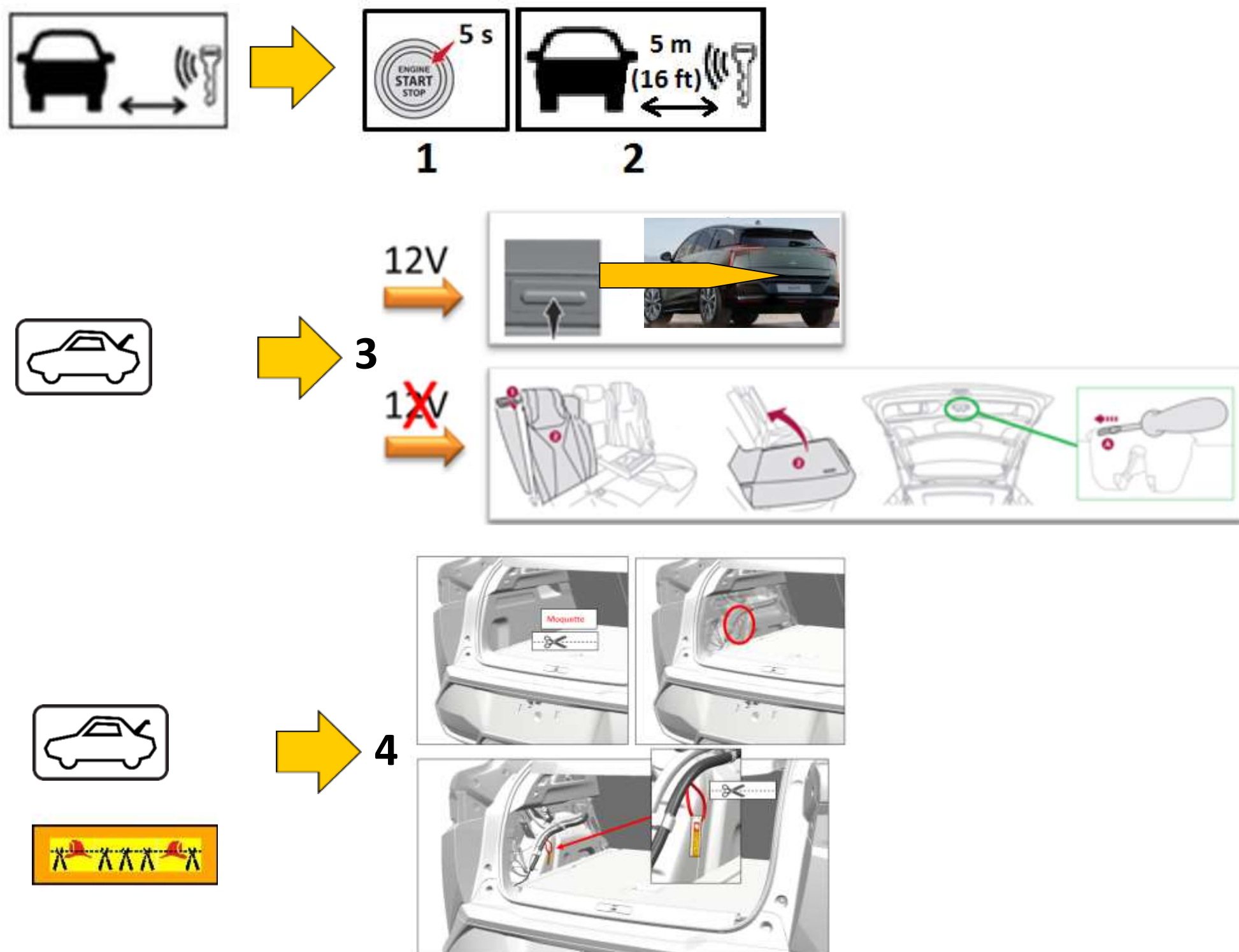


STELLANTIS	ID N°	Version N°	Version date	Page
	01365_25_00139	A	22/09/2025	2/5

Alternative disabling method 1



Alternative disabling method 2



4. Access to the occupants

— (serial production)
 - - - (optional product)

Glass types

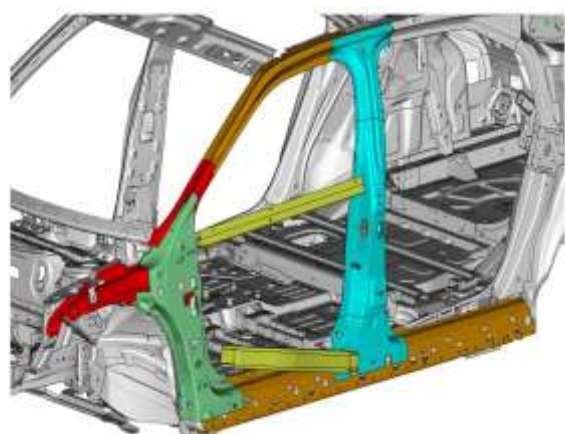


Toughened glass



Laminated glass

High strength steel body



Door latches

Seat adjustment

Longitudinal

Hauteur et inclinaison de l'assise

Inclinaison des dossiers



Steering column adjustment

5. Stored energy / liquids / gases / solids

	400V	
	0,9L	
	Warning, Electricity	
	12V	



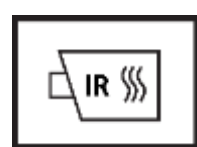
when coolant leaks from the battery pack, it can become unstable with risk of thermal runaway. Check battery pack temperature with thermal imaging camera.



6. In case of fire



Use large amount of water



RE-IGNITION POSSIBLE !



Lithium-ion batteries may self-ignite or reignite once the fire has been extinguished. Monitor the temperature of the high-voltage battery!

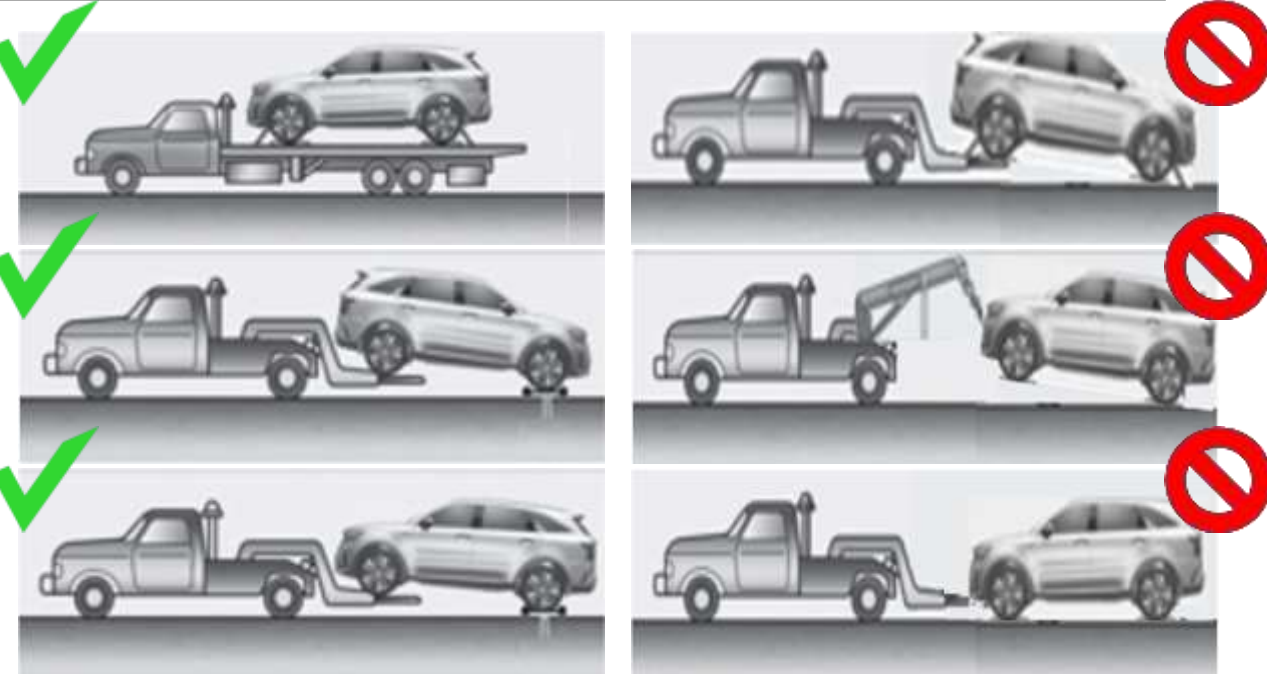
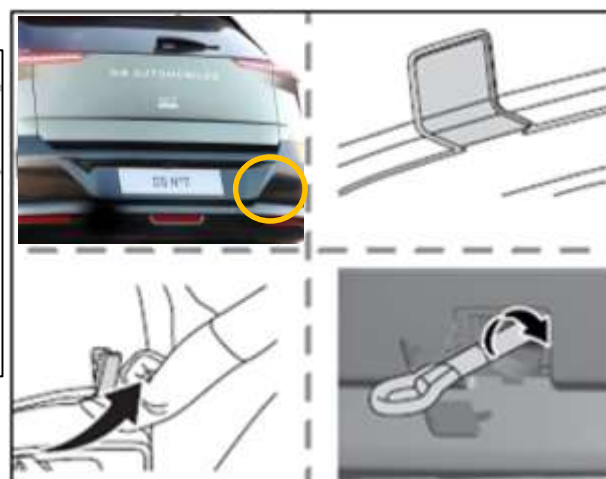
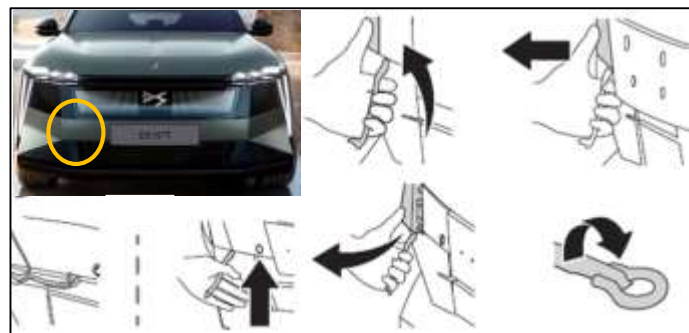
7. In case of submersion

Remove the vehicle from the water then refer to chapter 3, Disable direct hazards / safety regulation

8. Towing / transportation / storage

Location front hook

Location rear hook

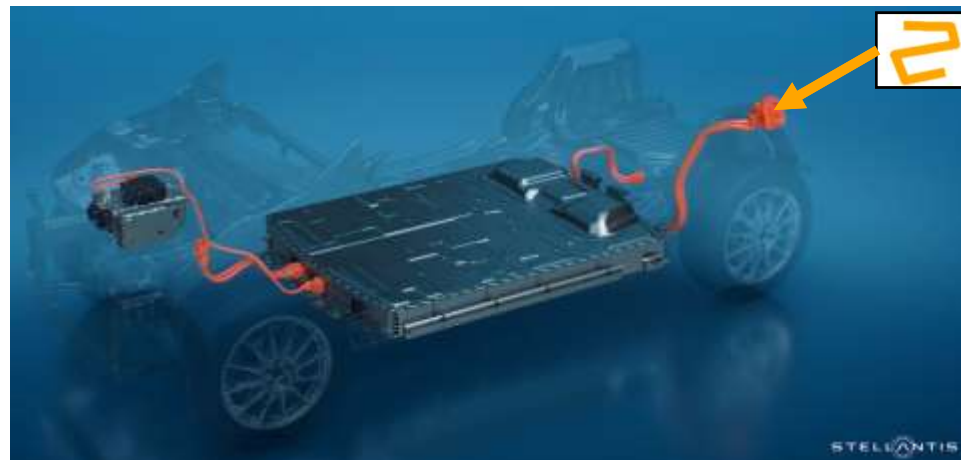
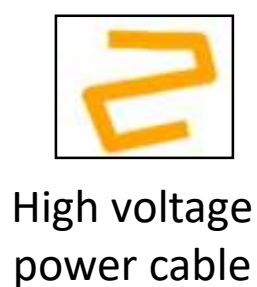
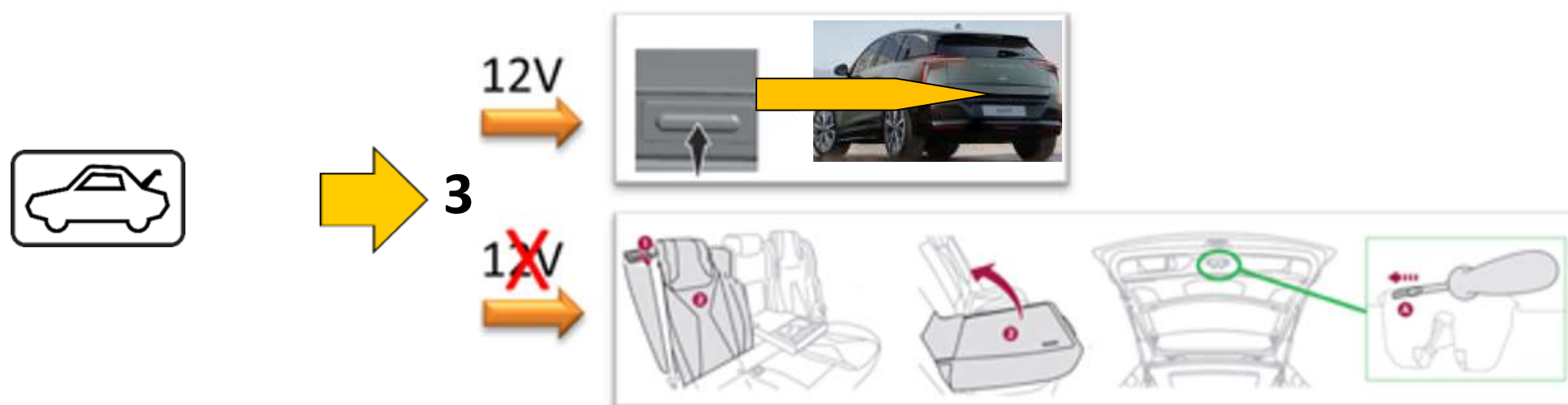


STORE AT SAFE DISTANCE FROM OTHER VEHICLES !



RE-IGNITION POSSIBLE !

9. Important additional information



10. Explanation of pictograms used

	Remove smart key		Flammable
	General warning sign		Hazardous to the human health
	Warning; low temperature		Acute toxicity
	Warning, Electricity		Explosive
	Air-conditioning component		Corrosives
	Electric Vehicle		Use water to extinguish the fire
	Use thermal Infrared camera		Bonnet
	Hayon / coffre		